



INTEGRATED WI-FI SOLUTION

Designed for Enterprise, Internet Service Provider (ISP),
Managed Service Provider (MSP) and
Application Service Provider (ASP)



OVERVIEW

Be connected on the move with high-bandwidth. With fast growing on the smart phone and devices, people are always looking for high-bandwidth access to share their photo/video on the move. Reliable and fast Wi-Fi became essential and cost-effective infrastructure on different indoor and outdoor environment.

Focusing on enterprise, campus, and hospitality markets, Edgecore Networks offers integrated Wi-Fi solutions for complex Wi-Fi environments, ensuring a high-performance, flexible, and cost-effective wireless experience. With integrated security, social media insights, and hotspot billing, Edgecore's solutions empower businesses with new opportunities for value-added services and Wi-Fi monetization.

PRODUCT PORTFOLIO



Cloud Controller



WLAN Gateway-Controller



Access Point



OpenWiFi Solution



Terragraph Certified Products

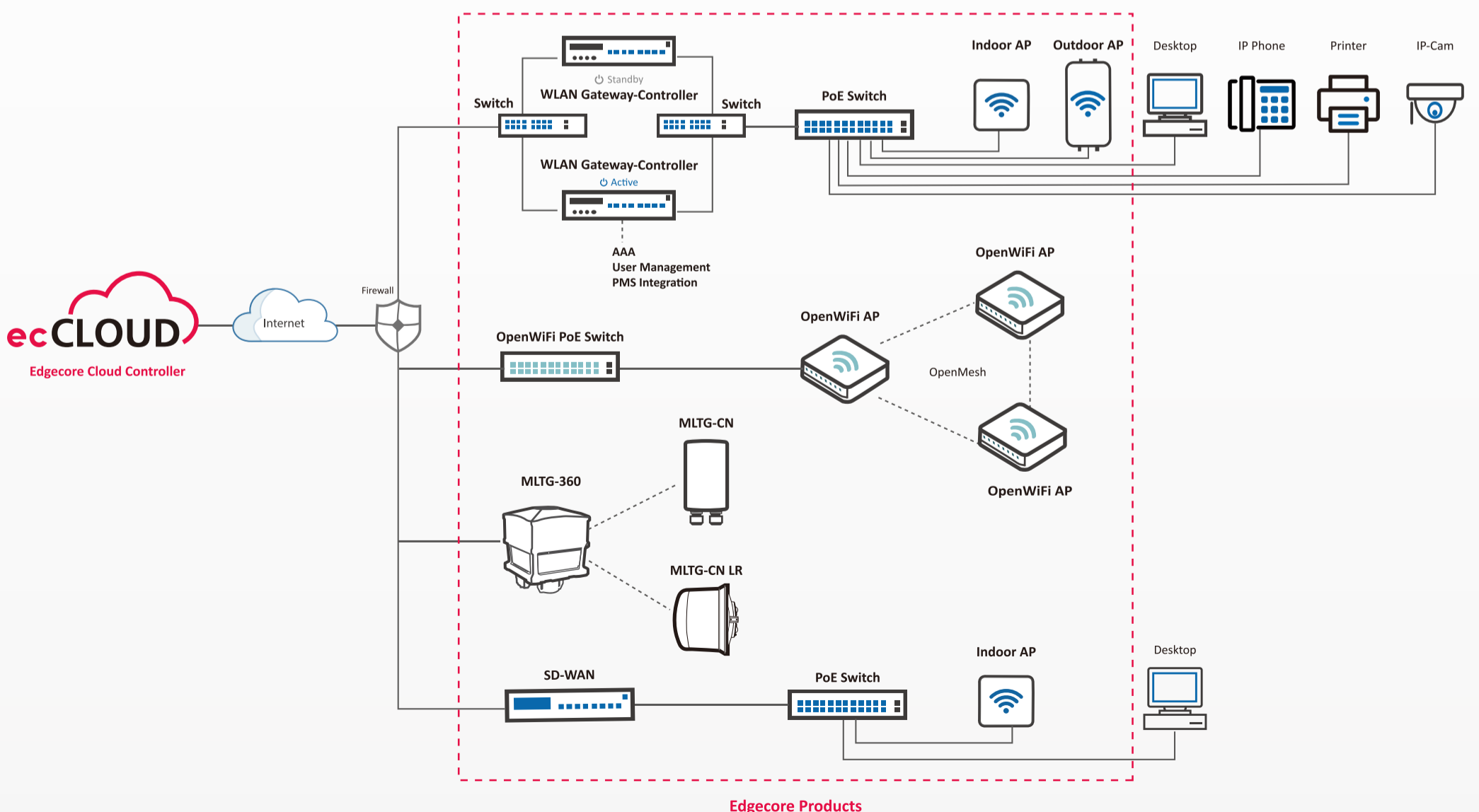


Enterprise Switch



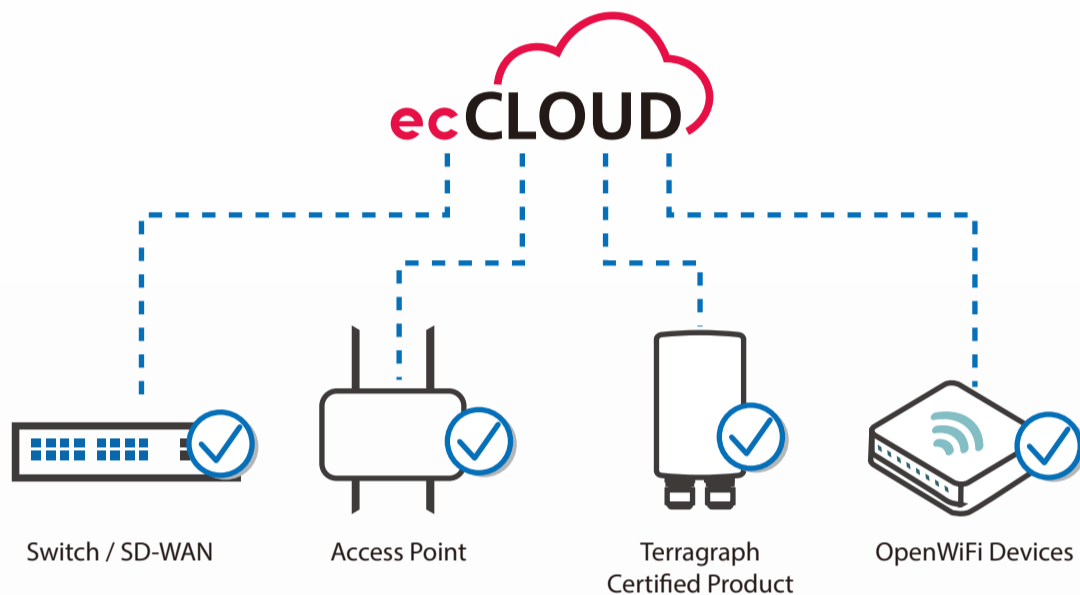
Work-From-Anywhere Solution (SD-WAN)

SOLUTION ARCHITECTURE

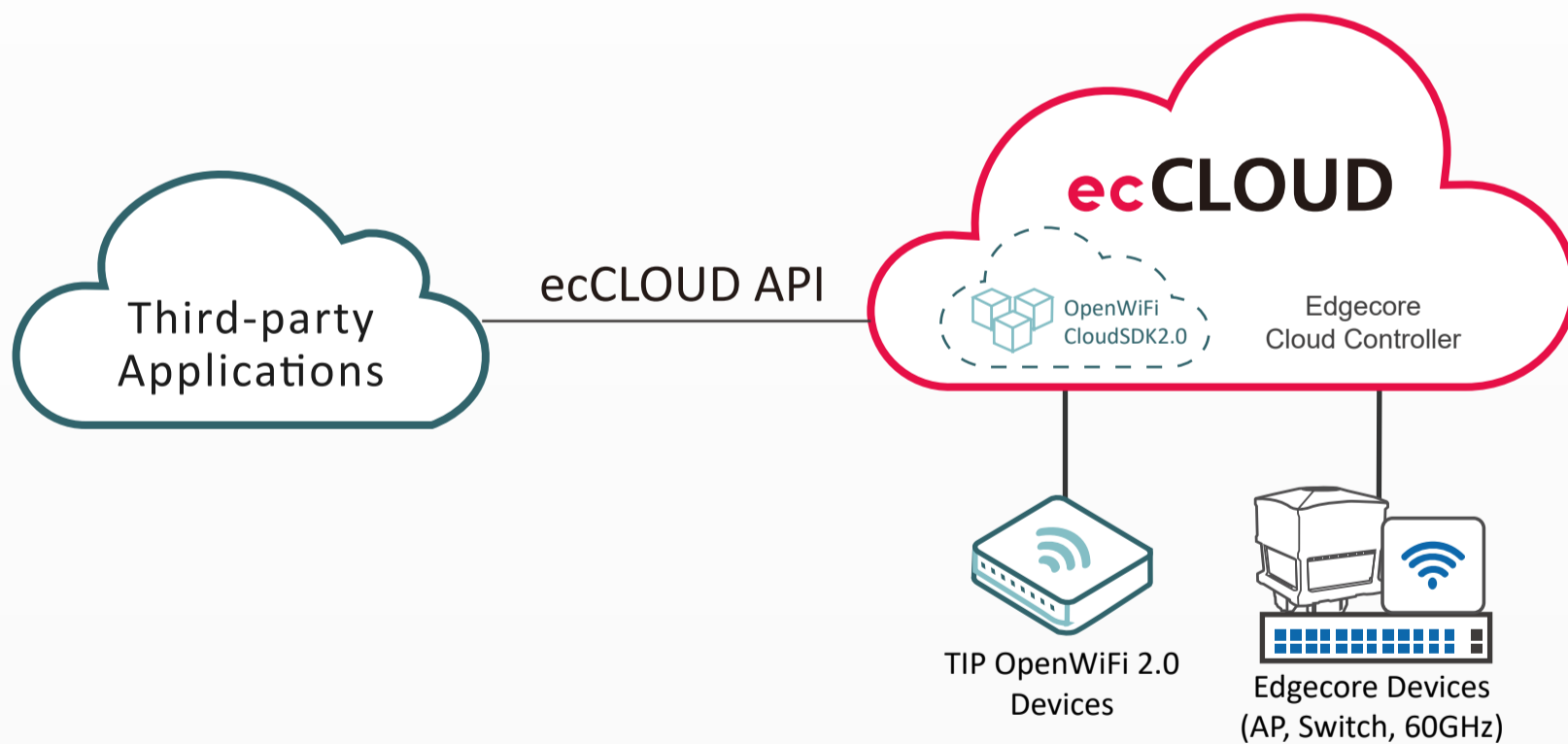


ecCLOUD SOLUTION

ecCLOUD Cloud Controller provides unified visibility and control over Edgecore wired and wireless devices, simplifying deployment, management and monitoring of your single-site or multi-site network. ecCLOUD provides feature rich, scalable, and ease of centralized management for networks of any size.



- ✓ Centralized management
- ✓ Multi-site, Multi-level and Multi-tenancy
- ✓ Dual images and firmware upgrade scheduling
- ✓ Device provisioning and service scheduling
- ✓ AAA and custom Captive Portal
- ✓ Logs, Report and Monitoring



ecCLOUD API for Third-party Applications

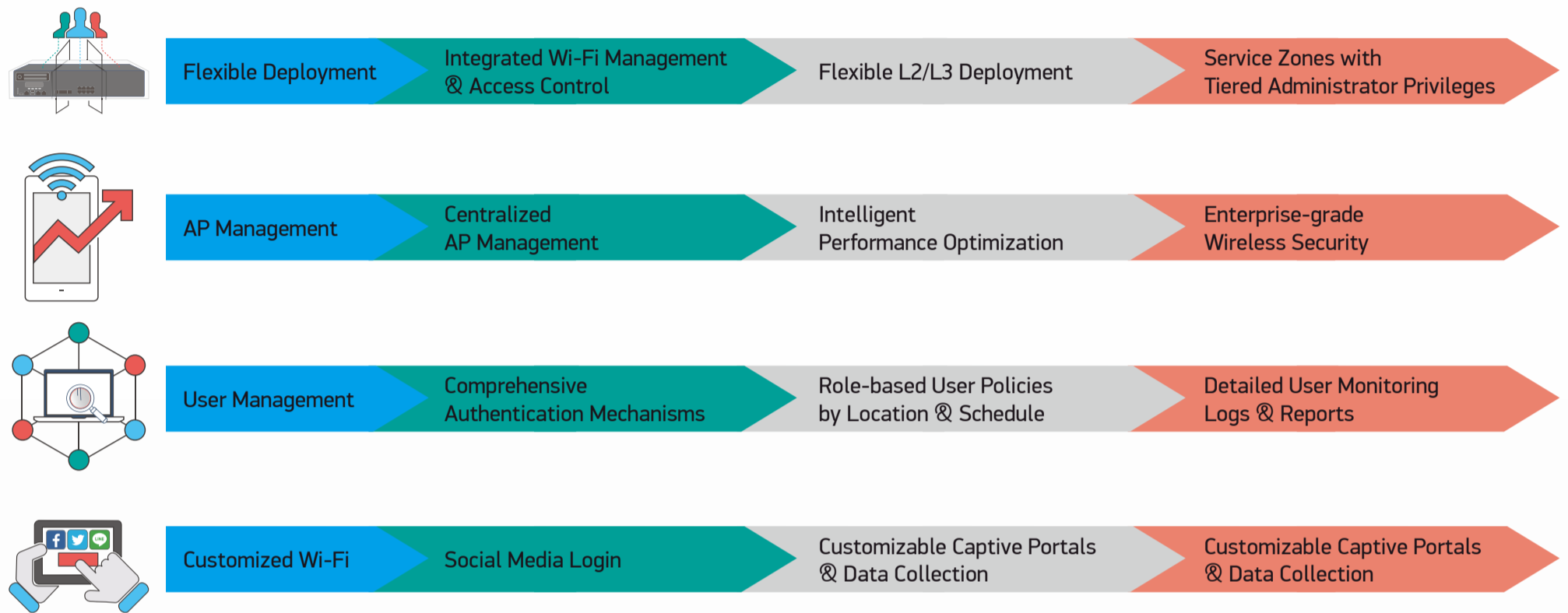
Edgecore provides the ecCLOUD API for third-party application development. Edgecore and software developers will have the freedom to develop better add-ons and software to further empower and advance the OpenWiFi ecosystem, building a mutually beneficial relationship with participating vendors.

ecCLOUD & CloudSDK 2.0 Integration

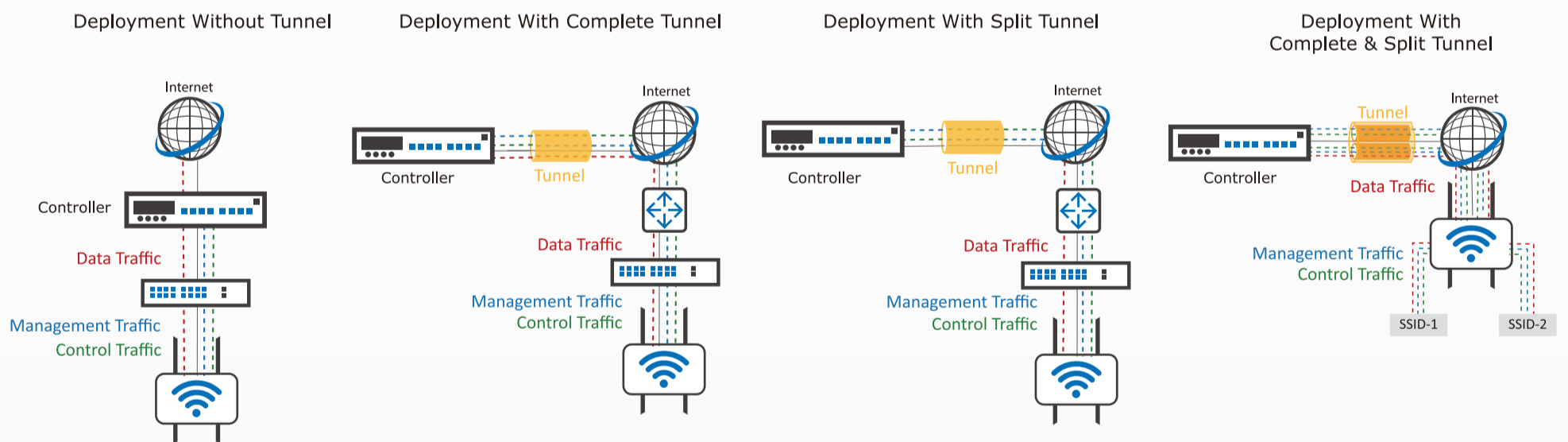
By converging with CloudSDK 2.0, the highlight of OpenWiFi 2.x, ecCLOUD can provide central management and visibility to all TIP OpenWiFi devices. Being the world's first TIP OpenWiFi cloud controller, ecCLOUD can support the full range of TIP OpenWiFi hardware devices and software applications, which realizes the dream of commercializing TIP OpenWiFi and making it a sustainable business model.

WLAN GATEWAY-CONTROLLER SOLUTION

Edgecore EWS-series gateway-controllers come with a complete suite of AP and User management functionality to simplify the deployment and management of complex Wi-Fi networks. As a hybrid architecture integrating both access gateway and WLAN Controller functionality in one box, network administrators are able to easily correlate user traffic logs, user policies, and AP statistics for more intelligent allocation of overall network resources.



WLAN GATEWAY-CONTROLLER SOLUTION ARCHITECTURES

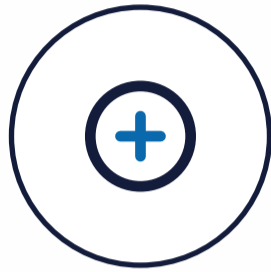


ACCESS POINT

Edgecore's portfolio of indoor and outdoor wireless access points utilize the latest in Wi-Fi standards and technology for all types of deployments, ensuring an optimal Wi-Fi experience. With centralized management, advanced QoS features, and enterprise-grade security, Edgecore helps organizations minimize both risks and costs. In addition, all Edgecore Access Points support OpenWiFi.



Ultra-fast
Wi-Fi Speed



Connect
More Devices



High-density
Connectivity

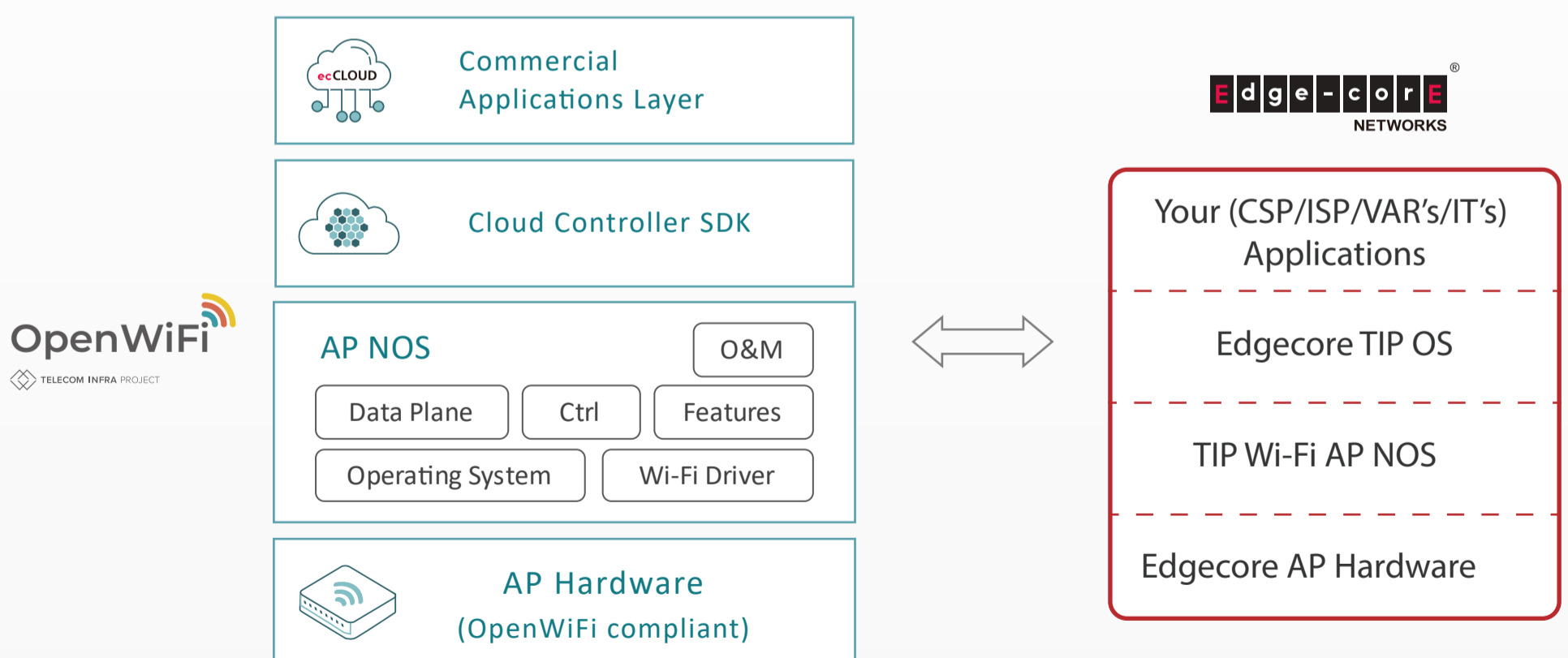


100%
Compatibility

OPENWIFI SOLUTION

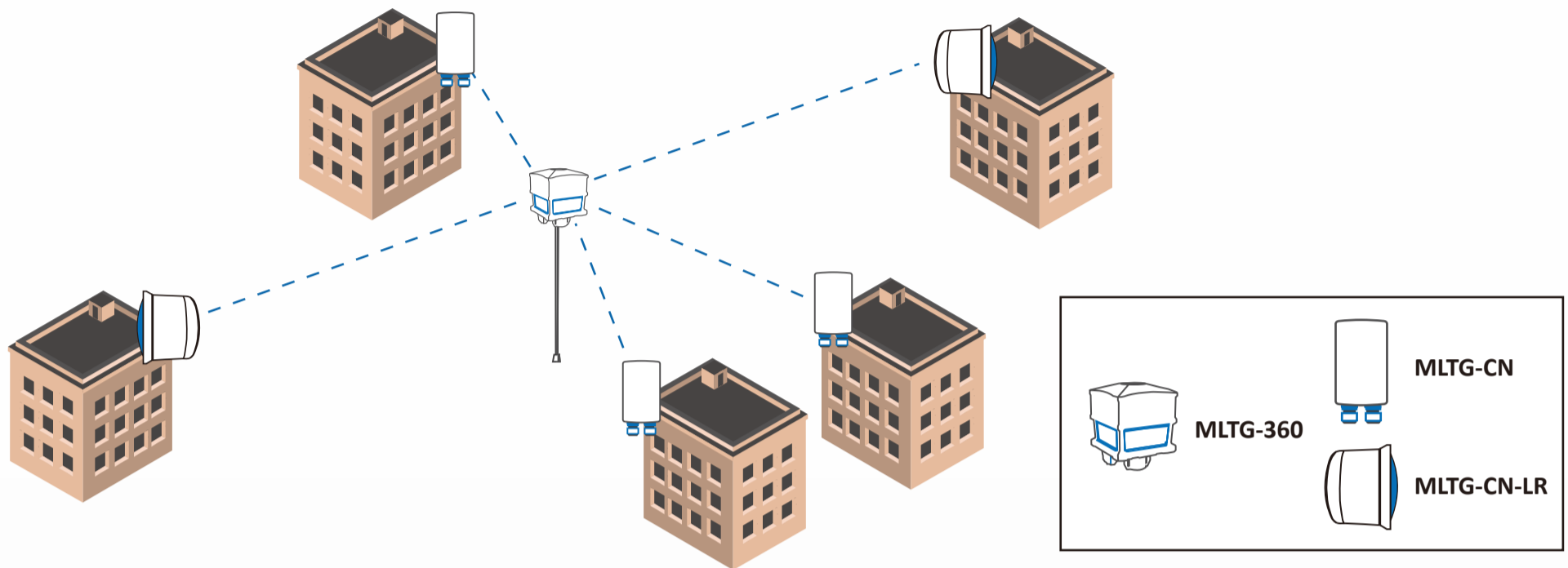
As an active contributing member of the Telecom Infra Project (TIP) Wi-Fi Project Group, Edgecore works with other TIP members to accelerate the pace of innovation in the Wi-Fi ecosystem by creating a cost-effective disaggregated open source solution aimed to improve global connectivity.

Edgecore provides a range of access points that comes preinstalled with TIP's Open AP software that offers users an open platform for further customization. From SMB to MDUs to larger venues, Edgecore TIP-ready access points can meet various usage and requirements.



TERRAGRAPH CERTIFIED 60GHz SOLUTION

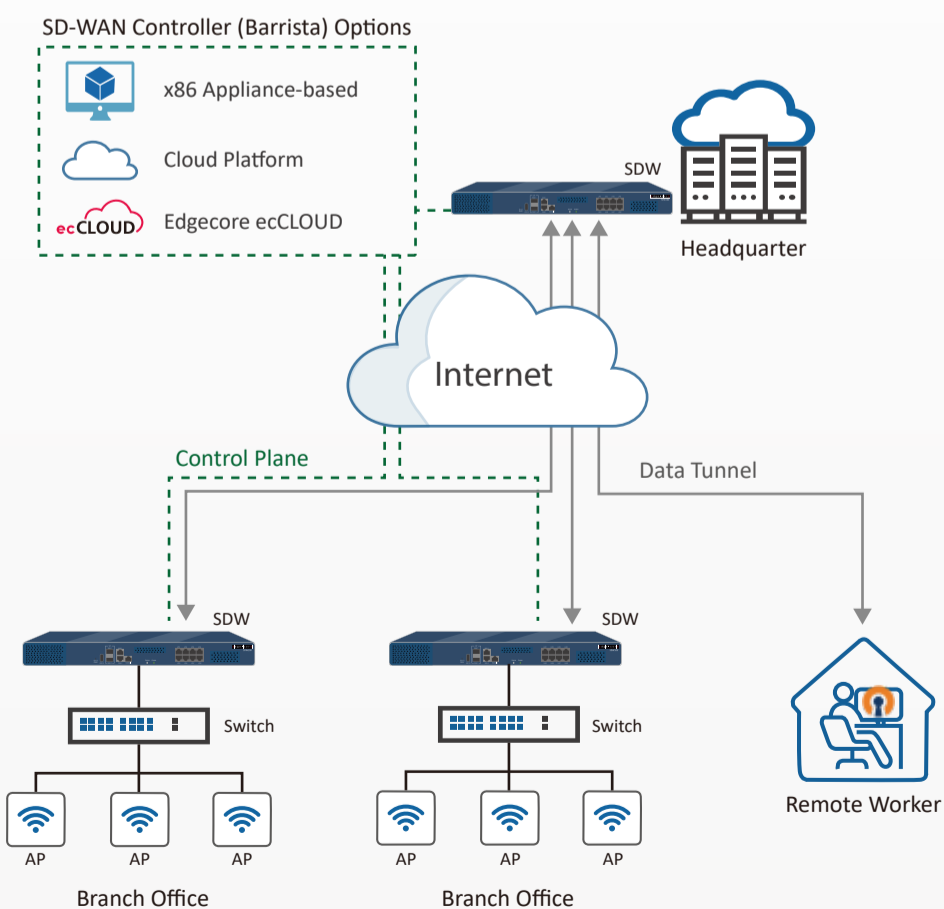
Edgecore Terragraph certified products utilize the 60 GHz mmWave band to enable the delivery of multi-gigabit connectivity wirelessly allowing quick roll-out of fiber-like wireless networks. The 60 GHz mmWave band offers unparalleled performance by combining both the benefits of unlicensed band operation with no interference.



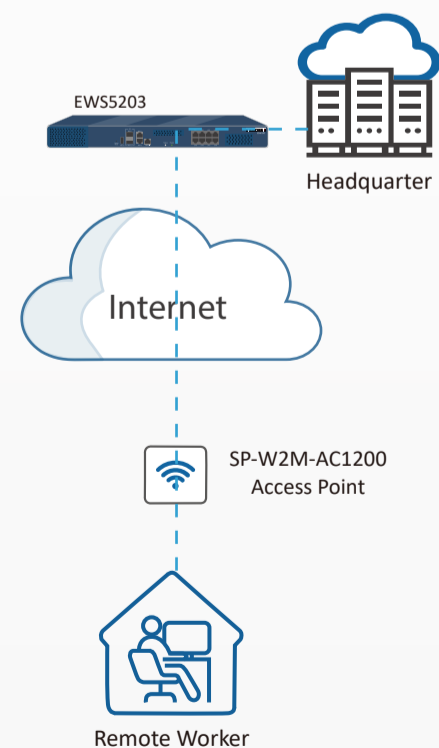
WORK FROM ANYWHERE SOLUTION

Edgecore Work-From-Anywhere (WFA) solution provides organizations a plug-and-play, secure, agile, reliable mechanism to deliver enterprise-grade services to their remote workers. Edgecore's SD-WAN solution is to address those network issues and able to provide robust, secure, adaptive network services on demand.

Solution 1 - SD-WAN



Solution 2 - SP-W2M-AC1200 & EWS5203



PRODUCT COMPARISON TABLE



TELECOM INFRA PROJECT

ACCESS POINT

Wi-Fi 6 Indoor



| Model Number | EAP101 | EAP102 | EAP104 |
|-------------------------------|--------------------------------------|--------------------------------------|---|
| Wi-Fi | 11ax | 11ax | 11ax |
| Radios | 2.4GHz, 5GHz, BLE / Zigbee | 2.4GHz, 5GHz, BLE / Zigbee | 2.4GHz, 5GHz, BLE / Zigbee |
| MIMO | 2x2:2 | 4x4:4 | 2x2:2 |
| PoE Specification | 802.3at | 802.3at | 802.3at |
| Uplink Ports | 1 x 2.5GbE (PoE) | 1 x 2.5GbE (PoE) | 1 x GbE (PoE) |
| LAN Ports | 2 x GbE | 1 x GbE | 4 x GbE (LAN4 PoE out) |
| Other Ports | 1 x RJ45 Console Port 1 x USB 2.0 | 1 x RJ45 Console Port 2 x USB 2.0 | 1 x Pass-through, 1 x micro-USB Console Port |
| Antenna | Built-in | Built-in | Built-in |
| ESSIDs | 32 | 32 | 32 |
| Max. Power Consumption | 22.4 W | 25 W | 12.9 W |
| Mounting | Wall / Ceiling / T-bar mount | Wall / Ceiling / T-bar mount | Wall / Wall-plate / Desktop (optional) |
| Dimensions (H x W x D; cm) | 19.5 x 19.5 x 3.9 | 20.1 x 19.5 x 4.1 | 16.1 x 9.0 x 3.4 |
| Weight | 0.42kg | 0.61kg | 0.45kg |

Wi-Fi 5 Indoor



| Model Number | ECW5211-L | ECW5410-L |
|-------------------------------|----------------------|--------------------------------------|
| Wi-Fi | 11ac wave2 | 11ac wave2 |
| Radios | 2.4GHz, 5GHz, BLE | 2.4GHz, 5GHz, BLE |
| MIMO | 2x2:2 | 4x4:4 |
| PoE Specification | 802.3af | 802.3at |
| Uplink Ports | 1 x GbE (PoE) | 1 x GbE (PoE) |
| LAN Ports | 1 x GbE | 1 x GbE |
| Other Ports | 1 x USB 2.0 | 1 x RJ45 Console Port 1 x USB 2.0 |
| Antenna | Built-in | Built-in |
| ESSIDs | 32 | 32 |
| Max. Power Consumption | 11W | 22.5W |
| Mounting | Wall / Ceiling Mount | Wall / Ceiling Mount |
| Dimensions (H x W x D; cm) | 14.7 x 14.7 x 3.5 | 19.0 x 19.0 x 3.3 |
| Weight | 0.36 kg | 0.61 kg |

Wi-Fi 5 Indoor



| Model Number | SP-W2M-AC1200 | SP-W2-AC1200 | SS-W2-AC2600 |
|-------------------------------|--------------------------------|----------------------|------------------------|
| Wi-Fi | 11ac wave2 | 11ac wave2 | 11ac wave2 |
| Radios | 2.4GHz, 5GHz, BLE | 2.4GHz, 5GHz, LTE | 2.4GHz, 5GHz |
| MIMO | 2x2:2 | 2x2:2 | 4x4:4 |
| PoE Specification | - | 802.3at | 802.3at |
| Uplink Ports | 1 x GbE | 1 x GbE (PoE) | 1 x GbE (PoE) |
| LAN Ports | 1 x GbE | 1 x GbE | 1 x GbE |
| Other Ports | 1 x USB 2.0 | 1 x USB 2.0 | - |
| Antenna | Built-in | Built-in | Built-in |
| ESSIDs | 16 | 16 | 32 |
| Max. Power Consumption | 6.5W | 12W | 24W |
| Mounting | Wall / Ceiling Mount / desktop | Wall / Ceiling Mount | Wall / Ceiling Mount |
| IP Rating | - | IP55 | IP55 |
| Dimensions (H x W x D; cm) | 8.3 x 8.3 x 2.2 | 17.6 x 16.2 x 3.3 | 21.88 x 22.38 x 3.5 mm |
| Weight | 0.082 kg | 0.417 kg | 0.85 kg |

Wi-Fi 5 Outdoor



| Model Number | OAP100 | OAP100e |
|-------------------------------|---|---|
| Wi-Fi | 11ac wave2 | 11ac wave2 |
| Radios | 2.4GHz, 5GHz, BLE, LTE (Optional) | 2.4GHz, 5GHz, BLE |
| MIMO | 2x2:2 | 2x2:2 |
| GPS | Yes | Yes |
| PoE Specification | 802.3at | 802.3at |
| Uplink Ports | 1 x GbE (PoE) | 1 x GbE (PoE) |
| LAN Ports | 1 x GbE (802.3af downlink PoE) | 1 x GbE (802.3af downlink PoE) |
| Other Ports | 1 x RJ45 Console Port / 1 x Vent | 1 x RJ45 Console Port / 1 x Vent |
| Antenna | Option I: Built-in Omni (2.4GHz), Azimuth & Elevation 20° (5GHz) Option II: Built-in Azimuth 130° & Elevation 30° (2.4 GHz), Azimuth 90° & Elevation 30° (5GHz) Built-in Antenna for BLE & GPS N-Type Female Connectors for LTE | 2.4GHz: Built-in Omni 5GHz: External N-type Connector 1 x Built-in Omni (BLE) 1 x Built-in GPS/GLONASS (GPS) |
| ESSIDs | 32 | 32 |
| Max. Power Consumption | 27.1W | 27.1W |
| Mounting | Pole mount | Pole mount |
| IP Rating | IP68 | IP68 |
| Operating Temperature | -40°C (-40°F) ~ 65°C (149°F) | -40°C (-40°F) ~ 65°C (149°F) |
| Dimensions (H x W x D; cm) | 45.0 x 23.0 x 7.0 | 45.0 x 23.0 x 7.0 |
| Weight | 2.10 kg | 2.10 kg |

WLAN Gateway-Controller



| Model Number | EWS101 | EWS5203 | EWS5204 | EWS5207 | EWS1000 |
|-------------------------------|---------------------------|---------------------------|---------------------------|---|---|
| Managed APs | 50 | 300 | 1,000 | 3,000 | 10,000 |
| Local Accounts | 2,000 | 10,000 | 30,000 | 50,000 | 120,000 |
| On-Demand Accounts | 2,000 | 10,000 | 30,000 | 50,000 | 120,000 |
| Max. Number of Online Users | 200 | 3,000 | 10,000 | 30,000 | 100,000 |
| Form Factor | 7.5" Desktop | 19" Rack-mount (1U) | 19" Rack-mount (1U) | 19" Rack-mount (2U) | 19" Rack-mount (2U) |
| WAN Ports | 1 x GbE | 2 x GbE or 2 x 1G SFP | 2 x GbE ; 2 x 1G SFP | 2 x GbE ; 2 x 10G SFP+ | 2 x GbE ; 2 x 10G SFP+ |
| LAN Ports | 4 x GbE | 8 x GbE | 6 x GbE ; 2 x 1G SFP | 6 x GbE ; 2 x 10G SFP+ | 6 x GbE ; 2 x 10G SFP+ |
| High Availability | No | Yes | Yes | Yes | Yes |
| Power | DC Input: 12V / 1A | Input: 100-240 VAC | Input: 100-240 VAC | Input: 100-240 VAC | Input: 100-240 VAC |
| LED Indicator | Power, Status | Power, Status | Power, HDD | Power, Power Error, HDD, System Standby | Power, Power Error, HDD, System Standby |
| Buttons | Restart / Reset | Restart / Reset | Restart | Restart | Restart |
| LCD Display | No | No | Yes | Yes | Yes |
| Operating Temperature | 0°C (32°F) ~ 40°C (104°F) | 0°C (32°F) ~ 40°C (104°F) | 0°C (32°F) ~ 40°C (104°F) | 0°C (32°F) ~ 40°C (104°F) | 0°C (32°F) ~ 40°C (104°F) |
| Operating Humidity | 5% ~ 95% non-condensing | 10% ~ 90% non-condensing | 10% ~ 90% non-condensing | 10% ~ 90% non-condensing | 10% ~ 90% non-condensing |
| Dimensions (W x D x H; cm) | 19.0 x 13.3 x 3.3 | 44.0 x 27.0 x 4.4 | 43.8 x 30.0 x 4.4 | 43.8 x 47.0 x 8.8 | 43.8 x 47.0 x 8.8 |
| Weight | 0.56 kg | 2.6 kg | 5.2 kg | 19.00 kg | 19.00 kg |

Note: Capacity limits may vary depending on configuration parameters

TERRAGRAPH CERTIFIED 60GHZ PRODUCTS



| Model Number | MLTG-360 | MLTG-CN | MLTG-CN LR |
|----------------------------|--|--|--|
| WiGig | 11ay | 11ay | 11ay |
| Supported Scenario | PTMP (Distribution Node) | PTP (Client Node) | PTP (Client Node) Long Range |
| 60GHz Radios | 4 x antenna tiles per radio | Phased array antenna with 64 antenna elements | Built-in phased array antenna with dish |
| | 64 antenna elements for each antenna tile | | |
| | 90 degrees azimuth scan range: -45° to 45° | 90 degrees azimuth scan range: -45° to 45° | Scan Range: +/- 3° |
| | 50 degrees elevation scan range: -25° to 25° | 50 degrees elevation scan range: -25° to 25° | Beam Width: 1° |
| Interface | 1 x Gigabit Ethernet Port (PoE In) | 1 x Gigabit Ethernet Port (PoE In) | 1 x 2.5G Ethernet Port (PoE IN) |
| | 1 x 10 Gigabit SFP+ Port | | |
| | 4 x Gigabit Ethernet Port (PoE Out) | 1 x Gigabit Ethernet Port | 1x SFP Port |
| | 4x 60GHz Radio per sector, total 16 radios | 1 x 60GHz Radio | 1x 60GHz Radio |
| Range | Up to 200m for MCS12 | When connected to MLTG-360: Up to 100m for MCS12' | When connected to MLTG-CN LR: Up to 1500m (0.93 mi) |
| | Up to 300m for MCS9 | When connected to MLTG-360: Up to 150m for MCS9' | When connected to MLTG-360: Up to 700m (0.43 mi) |
| IP Rating | IP66 | IP66 | IP66 |
| Operating Temperature | -40°C (-40°F) ~ 55°C (131°F) | -20°C (-4°F) ~ 55°C (131°F) | -40°C (-40°F) to 60°C (140°F) |
| Dimensions (H x W x D; cm) | 17.5 x 17.5 x 18.1 | 17.7 x 10.6 x 4.3 | 35.5 x 35.5 x 31.5 |
| Weight | 3.5 kg | 1.1 kg | 3 kg |

SD-WAN



| Model Number | SDW100 | SDW101 |
|----------------------------|--|---|
| WAN Ports | 2 x GbE or 2 x SFP | 2-port 10GbE SFP+(or 1G SFP) |
| LAN Ports | 8 x GbE | 8-port GE Ethernet (RJ45), 2-port 10GE |
| Other Ports | Console: 1 x RJ-45 USB ports: 1 x USB 3.0 | Console: 1 x RJ-45 USB ports: 1 x USB 3.0 |
| Bandwidth | Tunnel capability: up to 500Mbps. Throughput per tunnel: up to 300Mbps. | Tunnel capability: up to 1000Mbps. Throughput per tunnel: up to 320Mbps. |
| Concurrent Users | 500 | 1000 |
| Management | x86 Appliance-based Cloud Platform Edgecore ecCLOUD (2022, H1) | x86 Appliance-based Cloud Platform Edgecore ecCLOUD (2022, H1) |
| Operating Temperature | 0°C (32°F) to 40°C (104°F) | 0°C (32°F) ~ 40°C (104°F) |
| Dimensions (H x W x D; cm) | 42.6 x 27.0 x 4.4 | 44.2 x 29.83 x 4.36 |
| Weight | 2.64 kg | 3.08 kg |



About Edgecore Networks

Edgecore Networks delivers wired and wireless networking products and solutions through channel partners and system integrators worldwide for the Data Center, Service Provider, Enterprise and SMB customers. Edgecore Networks is the leader in open networking providing a full line of open WiFi access points, packet transponders, virtual PON OLTs, and 1G, 2.5G, 10G, 25G, 100G and 400G OCP-ACCEPTED™ switches that offer choice of commercial and open source NOS and SDN software.

www.edge-core.com

© 2022 Edgecore Networks Corporation. All rights reserved.

Edgecore Networks reserves the right to amend, suspend or cancel these terms and conditions without notices.

Additional information : Email: sales@edge-core.com
Tel: +886-3-563-8888 | +1-949-336-6801 (Irvine,CA)